



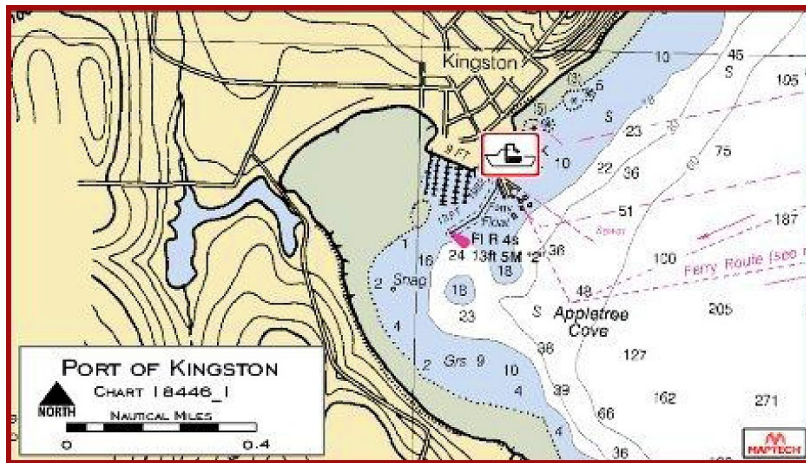
## Pumpout Facility

### Location

Located on Puget Sound, in Appletree Cove, Kitsap County Washington.

**Latitude**      47.7939044      47° 47' 38"  
**Longitude**    -122.49938328    122° 29' 58"

THIS REPRODUCTION IS NOT FOR USE IN NAVIGATION



### Pumpout Facility Information

The Port of Kingston is a full service marina with a free, self-serve pumpout. This facility is open year round. Access to the pumpout is limited to vessels with a length of no more than 75 feet, and is located on the Fuel Dock.

The Port is open every day from 8:00am – 4:30pm. Extended hours are from 8:00am – 6:30pm, Friday and Saturday during our peak season (Memorial Day through Labor Day). NOTE: Please give the Port Staff a thirty minute advance notice in order to supply the pumpout hose.

A clean marine environment is very important for everyone to enjoy the beautiful bodies of water throughout Washington. We ask that you do your part in helping keep Washington's waterways clean by consistently using the provided pumpout stations in the Puget Sound.

Washington offers more than 100 disposal facilities with a variety of stationary and portable pumpouts to provide a convenient way to properly dispose of boat sewage. For additional convenience, on-the-water restrooms and pumpout skiffs are also available throughout the Puget Sound waterways.

Each year the State Parks Boating Program updates the [Adventures in Boating Washington](#) brochure, which includes a detailed list of pumpout locations.

## **General operating procedures for the “Pump-A-Head” pumpout at the Port of Kingston**

- Push the green “go” button on the side of the pumpout to activate the pump.
- Open ball valve PRIOR to inserting nozzle into vessel. This will allow the air pressure to equalize, avoiding blowback.
- Create an airtight seal with the nozzle and continue to pump waste until liquid is no longer visible in viewing window of nozzle.
- Close ball valve after pump is complete.
- Reopen the ball valve and flush the pumpout hose with sea water for at least 30 seconds after each use.
- Continue running the hose once pulled out of the sea water to minimize water in the hose before recoiling it on the reel.
- If the pump timer has not already shut off, please push the red “stop” button to terminate pump operation.

It is advised to release air pressure each time you restart the pumpout, pausing with valve closed may cause pressure to build up between uses.

**NOTE: DO NOT use the pumpout for anything other than its intended use. Pumping oily bilges is Prohibited. Please report any problems or pose any questions to the Port Staff.**