



**PORT OF KINGSTON**  
**THE PORT OF KINGSTON**  
**IS SEEKING QUALIFIED**  
**CONTRACTORS TO**  
**PERFORM MAINTENANCE**  
**ON THE PORT OF**  
**KINGSTON PASSENGER-**  
**ONLY FERRY BARGE.**

The scope of work includes:  
Disconnecting from mooring,  
drydocking, sandblasting, and painting  
all surfaces inside and out. The scope  
will also include reattachment and  
ballasting of  
barge for service.

Plans, specifications and scope of work  
are available at the Port office and on  
our website [www.portofkingston.org](http://www.portofkingston.org).

Qualified contractors will have until  
May 4 at 4PM to submit a formal  
proposal to the Port of Kingston.

Timing of this project is critical. Work  
needs to be completed on this project by  
July 31, 2018

Tours of the barge are recommended  
and available upon request.

**Proposals should be sent to Jim  
Pivarnik, Executive Director by  
end of day May 4, 2018**

**Email: [jimp@portofkingston.org](mailto:jimp@portofkingston.org)**

**Phone: 360-297-3545**

PROOF O.K. BY: \_\_\_\_\_  O.K. WITH CORRECTIONS BY: \_\_\_\_\_

PLEASE READ CAREFULLY • SUBMIT CORRECTIONS ONLINE

ADVERTISER: PORT OF KINGSTON  
SALES PERSON: Thure Gray  
PUBLICATION: BR-DAILY  
SIZE: 1 col X 6 in

PROOF CREATED AT: 4/19/2018 12:59 PM  
PROOF DUE: -  
NEXT RUN DATE: 04/21/18

BR-1992340.INDD



## **Port of Kingston Scope of Work**

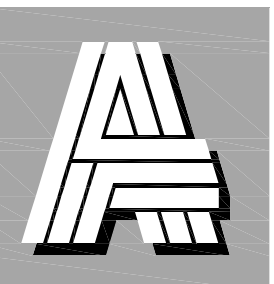
### **Passenger Ferry Barge**

The Port of Kingston owns a 90'X40' steel barge that has been used for a boarding float for passenger ferry service to Seattle. With the passage of the passenger ferry levy with Kitsap Transit last year the desire to start service back in Kingston has resumed. The barge has not been dry docked for the past 10 years and is in need of maintenance and refurbishment. The barge presently has four welded to the barge pile hoops that will need to be removed and redesigned so that they can be easily removed for future maintenance and re attached. In addition there is a 40-foot shipping container on the deck will need to be removed, cleaned and painted as part of the project. The barge presently has (20) zincs that will need to be replaced. The bottom of the barge will need to be painted as well as all of the surfaces inside and out. There are 8 separate tanks on the inside. Each will need to be blasted and painted. At this time we do not believe that there are any structural issues with the barge.

#### Scope of Work:

1. Disconnect Barge for tow, reconnect upon return
2. Tow Barge to Dry Dock and return to Kingston
3. Dry docking
4. R/R Zinc Anodes
5. Open/Close 8 individual manhole covers
6. Crop and renew 8 individual manhole covers, stud rings and covers
7. R/R Container, on deck and refurbish
8. R/R decking on ramp and landing platform
9. Remove existing tire fenders, provide and install new tire fenders
10. Blast and coatings to underwater hull
11. Blast and coatings to freeboard
12. Blast and coatings to main deck
13. Blast and coatings to 8 individual tanks

All proposals must include proof of dry-dock availability. Record of prior experience of project similar to this project and projected timeline to achieve a completion date of July 31<sup>st</sup> 2018.



**ART  
ANDERSON**  
ASSOCIATES

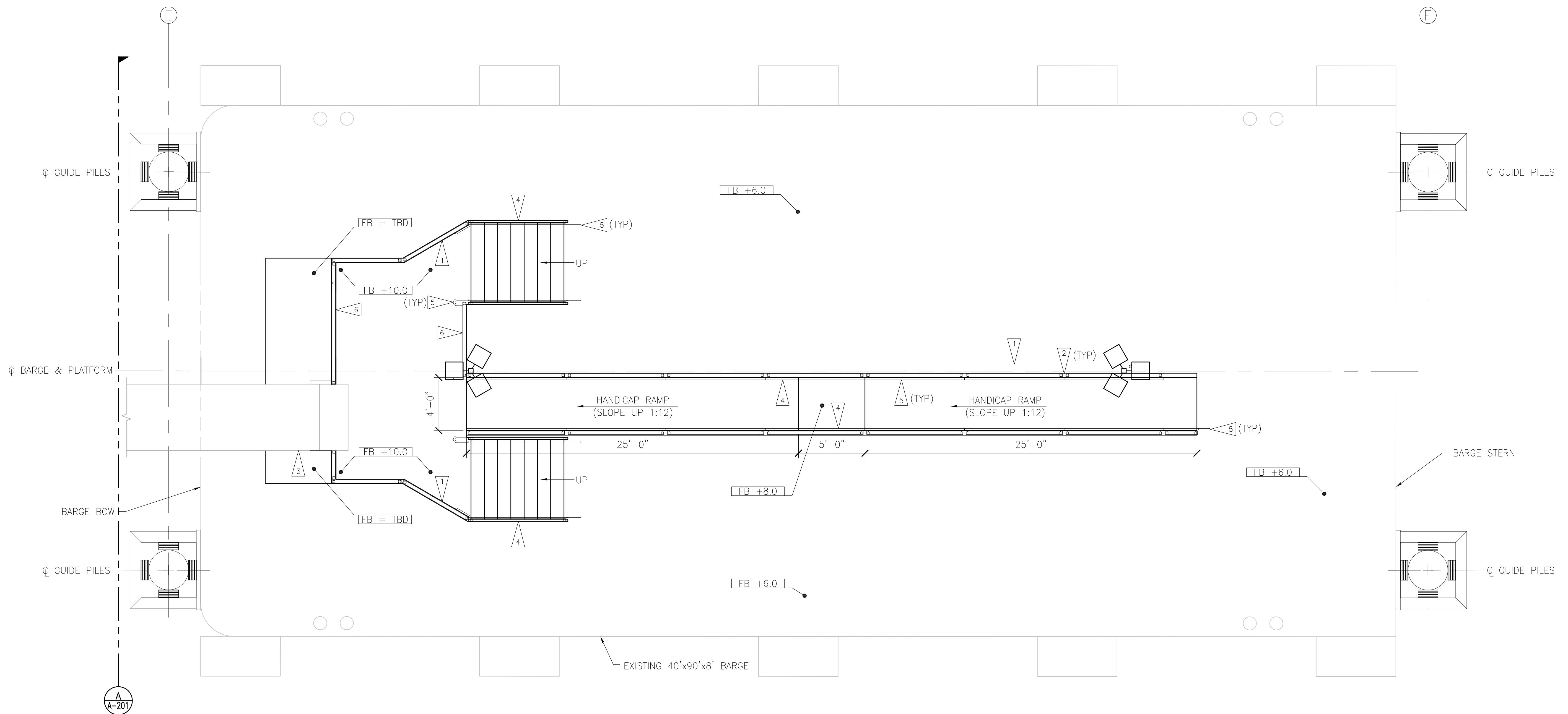
202 PACIFIC AVE  
BREMERTON, WA 98337  
(360) 479-5600

810 THIRD AVE SUITE 700  
SEATTLE, WA 98104  
(206) 622-6221



EXPIRES 7-12-06

**AQUA EXPRESS  
NEW PASSENGER FERRY DOCK  
AT PORT OF KINGSTON  
BARGE FABRICATION PACKAGE**



**1 BARGE PLAN**  
A-101 SCALE: 1/4"=1'-0"

**FLAG NOTES:**

- 1 TYPICAL GUARDRAIL. PROVIDE GUARDRAIL ALONG EDGE OF NEW WALKWAY.
- 2 LAYOUT GUARDRAIL SECTIONS SO THAT A 4" SPHERE WILL NOT PASS THROUGH THE OPENING. ADJUST LENGTH OF STANDARD PANEL WHERE NECESSARY.
- 3 GAP VARIES THROUGHOUT TIDE RANGE. EXTEND GUARDRAIL ON GANGWAY CANTILEVERED TO PROVIDE PROTECTION THROUGHOUT TRAVEL DISTANCE. OVERLAP GUARDRAIL SECTIONS AND PROVIDE HORIZONTAL OFFSET AT THESE LOCATIONS.
- 4 TYPICAL GUARDRAIL WITH HANDRAIL PER 2/A-501. PROVIDE GUARDRAIL ALONG EDGE OF NEW WALKWAY.
- 5 EXTEND HANDRAIL 1'-0" BEYOND STAIRS & RAMP INCLINE. TERMINATE ENDS PER I.B.C. REQUIREMENTS, TYPICAL.
- 6 PROVIDE REMOVEABLE GUARDRAIL.

DRAWN: KJH

DESIGNED: PRV

CHECKED: RFH

DATE

23SEP04

REVISIONS

JOB NO

FWAQX001

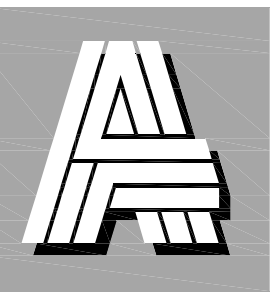
SHT TITLE

BARGE PLAN

SHT NO

**A-101**

IF SHEET IS NOT  
22"x34"  
SCALE  
ACCORDINGLY

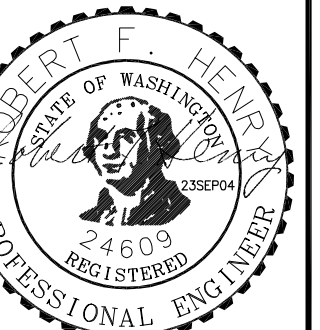


**ART  
ANDERSON**

ASSOCIATES

202 PACIFIC AVE  
BREMERTON, WA 98337  
(360) 479-5600

810 THIRD AVE SUITE 700  
SEATTLE, WA 98104  
(206) 622-6221



EXPIRES 7-12-06

**AQUA EXPRESS  
NEW PASSENGER FERRY DOCK  
AT PORT OF KINGSTON  
BARGE FABRICATION PACKAGE**

DRAWN: KJH

DESIGNED: PRV

CHECKED: RFH

DATE

23SEP04

REVISIONS

JOB NO

FWAQX001

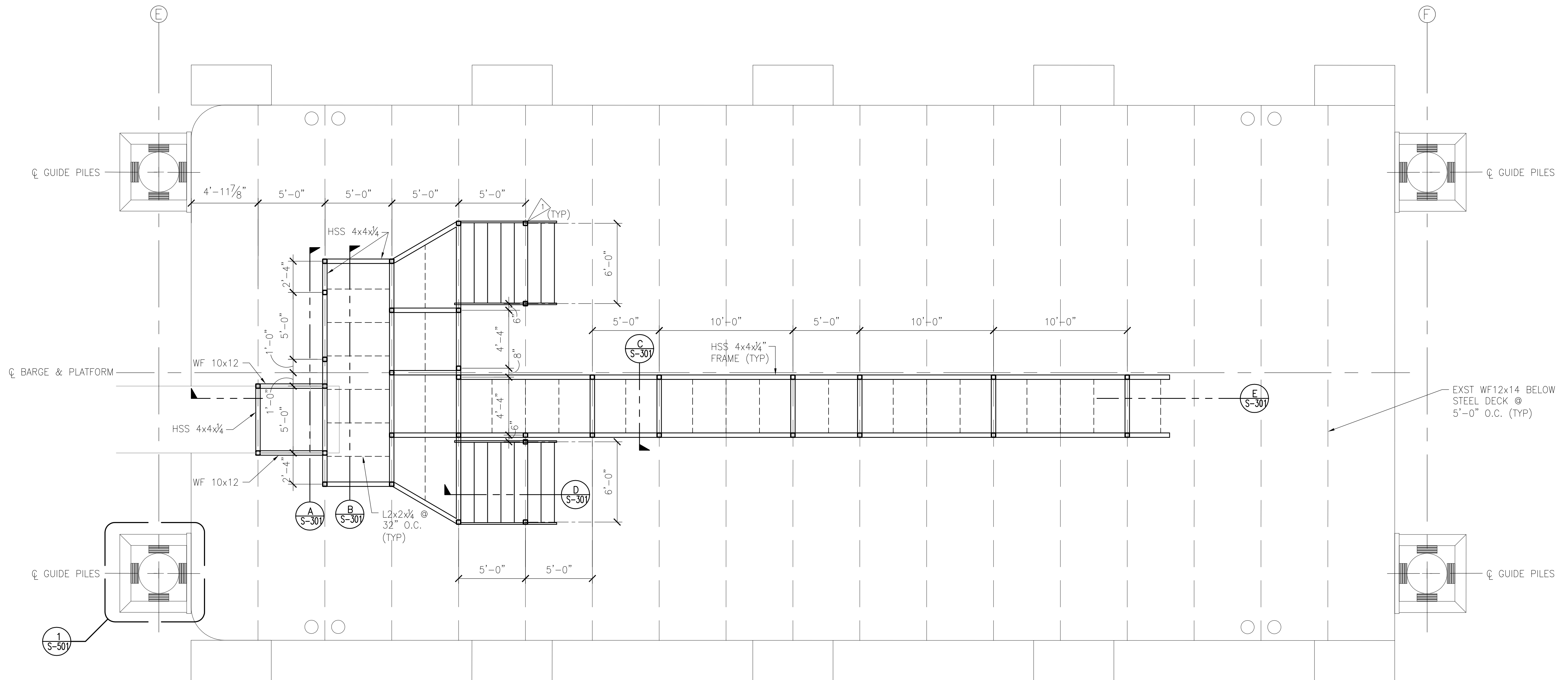
SHT TITLE

BARGE

FRAMING PLAN

SHT NO

**S-101**



**1** LOWER LEVEL FRAMING PLAN  
S-401 SCALE: 1/4"=1'-0"

**FLAG NOTES:**

**1** CENTER COLUMNS OVER BARGE FRAMES, TYPICAL.

IF SHEET IS NOT  
22"x34"  
SCALE  
ACCORDINGLY