

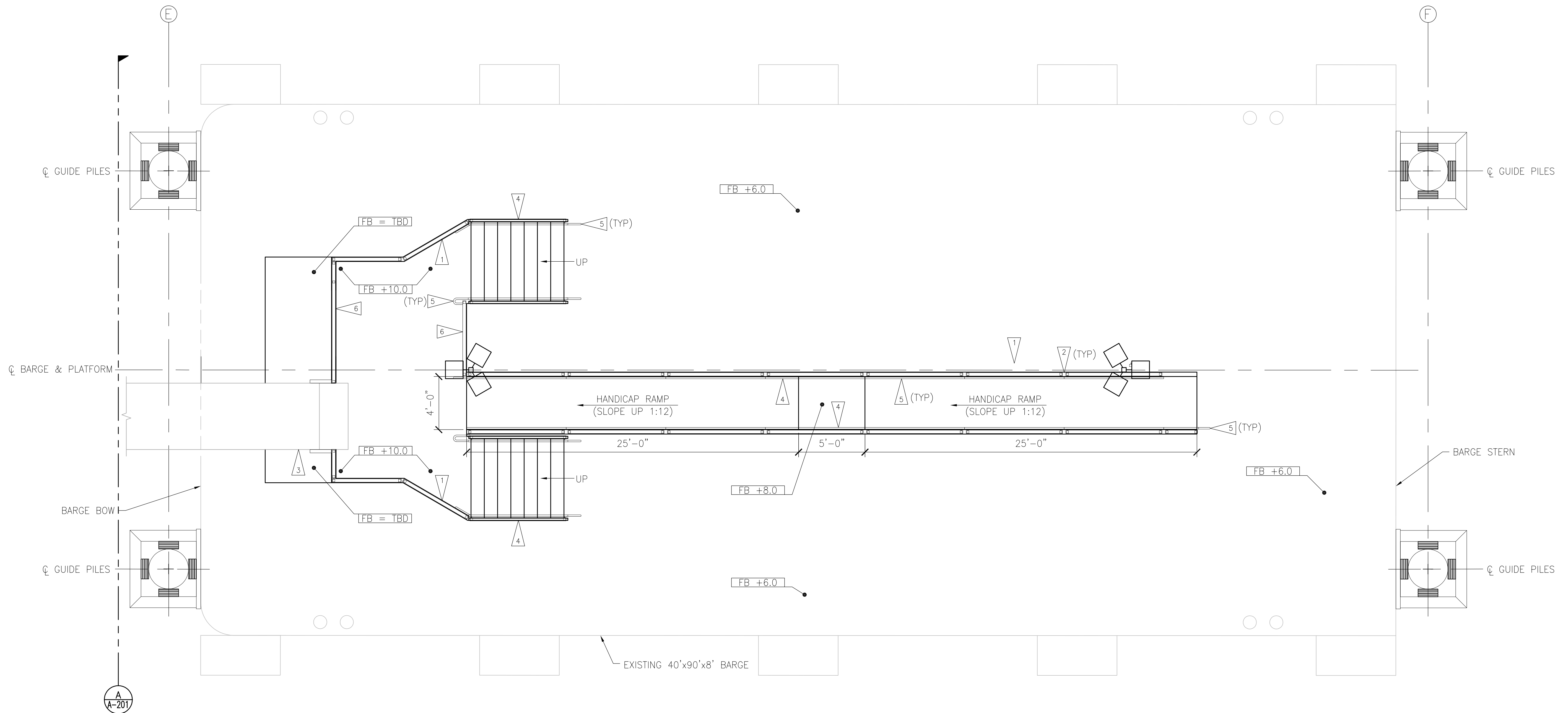
**ART
ANDERSON**
ASSOCIATES

202 PACIFIC AVE
BREMERTON, WA 98337
(360) 479-5600
810 THIRD AVE SUITE 700
SEATTLE, WA 98104
(206) 622-6221



EXPIRES 7-12-06

**AQUA EXPRESS
NEW PASSENGER FERRY DOCK
AT PORT OF KINGSTON
BARGE FABRICATION PACKAGE**



1 BARGE PLAN
A-101 SCALE: 1/4"=1'-0"

FLAG NOTES:

- 1 TYPICAL GUARDRAIL. PROVIDE GUARDRAIL ALONG EDGE OF NEW WALKWAY.
- 2 LAYOUT GUARDRAIL SECTIONS SO THAT A 4" SPHERE WILL NOT PASS THROUGH THE OPENING. ADJUST LENGTH OF STANDARD PANEL WHERE NECESSARY.
- 3 GAP VARIES THROUGHOUT TIDE RANGE. EXTEND GUARDRAIL ON GANGWAY CANTILEVERED TO PROVIDE PROTECTION THROUGHOUT TRAVEL DISTANCE. OVERLAP GUARDRAIL SECTIONS AND PROVIDE HORIZONTAL OFFSET AT THESE LOCATIONS.
- 4 TYPICAL GUARDRAIL WITH HANDRAIL PER 2/A-501. PROVIDE GUARDRAIL ALONG EDGE OF NEW WALKWAY.
- 5 EXTEND HANDRAIL 1'-0" BEYOND STAIRS & RAMP INCLINE. TERMINATE ENDS PER I.B.C. REQUIREMENTS, TYPICAL.
- 6 PROVIDE REMOVEABLE GUARDRAIL.

DRAWN: KJH

DESIGNED: PRV

CHECKED: RFH

DATE

23SEP04

REVISIONS

JOB NO

FWAQX001

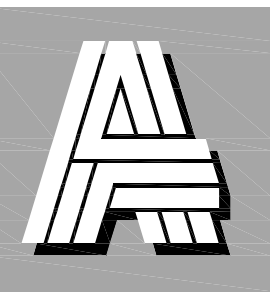
SHT TITLE

BARGE PLAN

SHT NO

A-101

IF SHEET IS NOT
22"x34"
SCALE
ACCORDINGLY

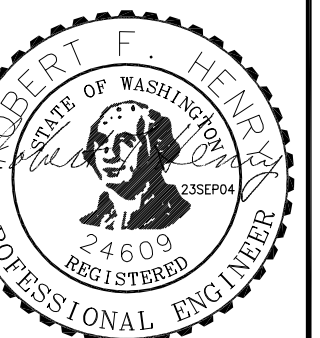


**ART
ANDERSON**

ASSOCIATES

202 PACIFIC AVE
BREMERTON, WA 98337
(360) 479-5600

810 THIRD AVE SUITE 700
SEATTLE, WA 98104
(206) 622-6221



EXPIRES 7-12-06

**AQUA EXPRESS
NEW PASSENGER FERRY DOCK
AT PORT OF KINGSTON
BARGE FABRICATION PACKAGE**

DRAWN: KJH

DESIGNED: PRV

CHECKED: RFH

DATE

23SEP04

REVISIONS

JOB NO

FWAQX001

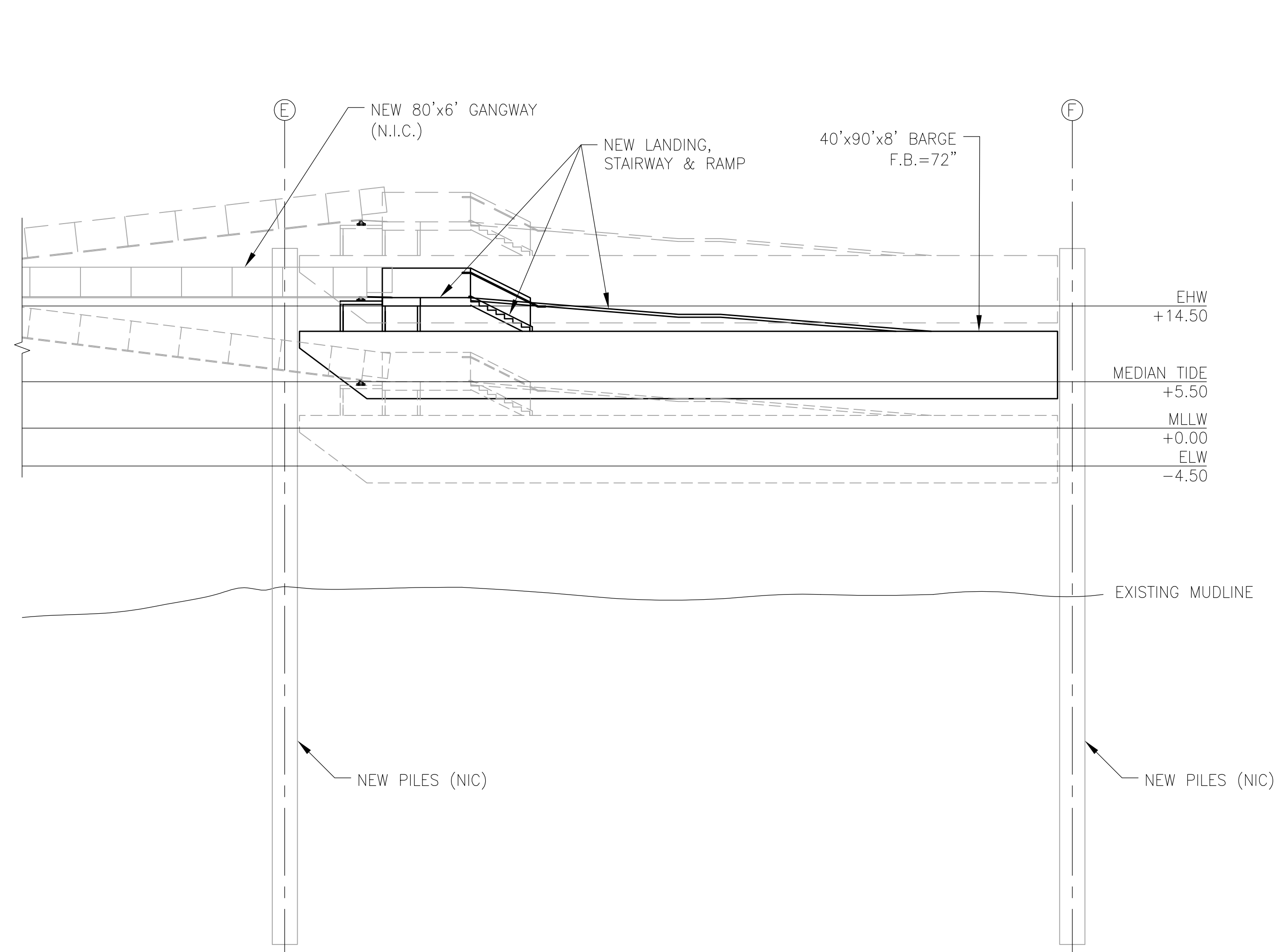
SHT TITLE

BARGE ELEVATION

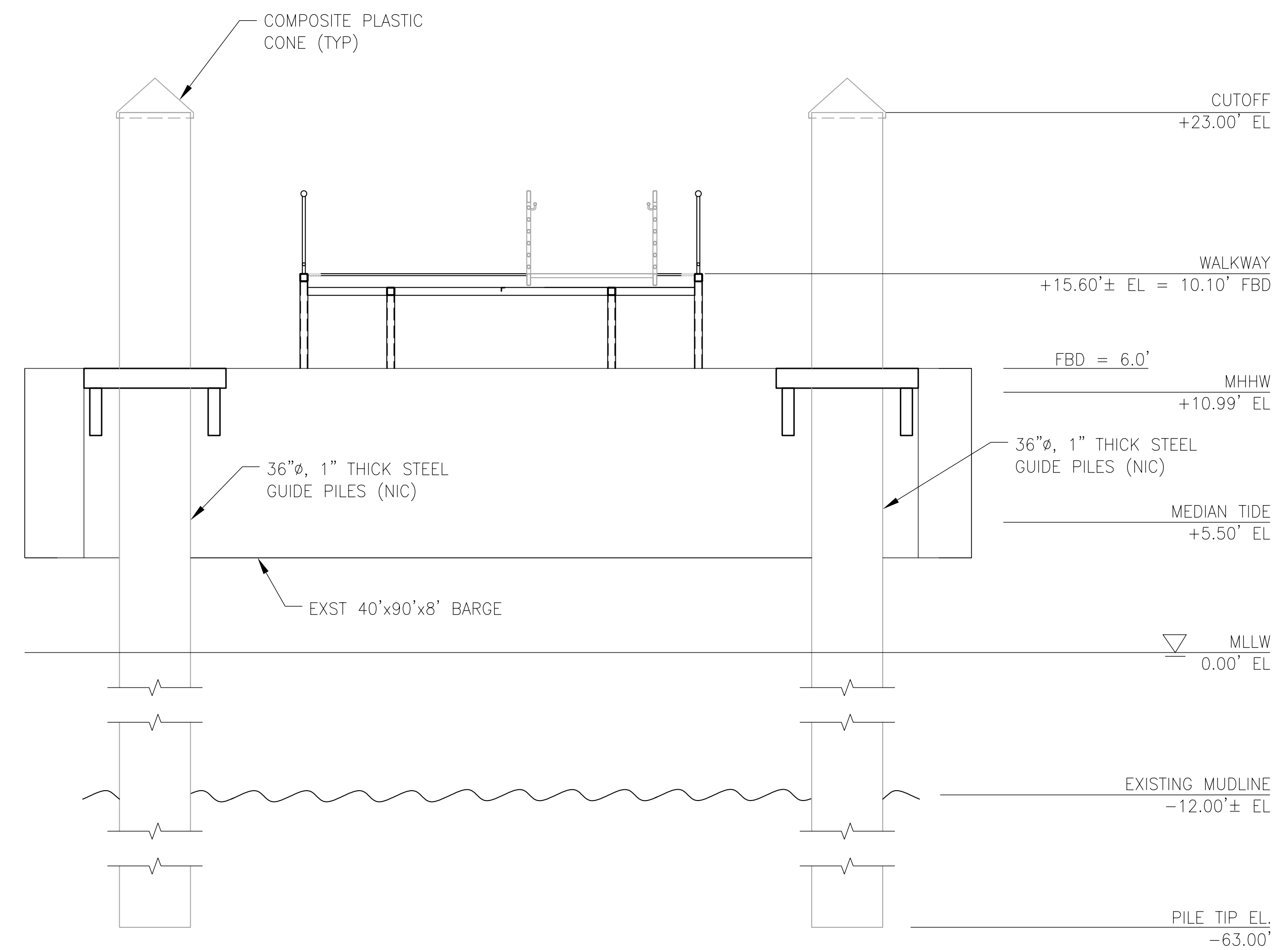
& SECTION

SHT NO

A-201



1 GANGWAY & BARGE ELEVATION
A-201 SCALE: 3/32"=1'-0"

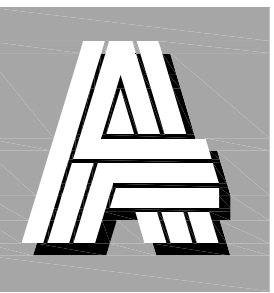


GRIDLINE "E" (SIM TO F)
EXISTING BARGE SECTION
A-201 SCALE: 1/4"=1'-0"

EHW	=	+14.50'
HAT	=	+12.17'
MHHW	=	+10.99'
MHW	=	+10.14'
MEDIAN TIDE	=	+5.50'
MLW	=	+2.82'
MLLW	=	0.00'
LAT	=	-1.17'
ELW	=	-4.50'

HAT = HIGHEST ACCESSIBLE TIDE
LAT = LOWEST ACCESSIBLE TIDE

IF SHEET IS NOT
22"x34"
SCALE
ACCORDINGLY

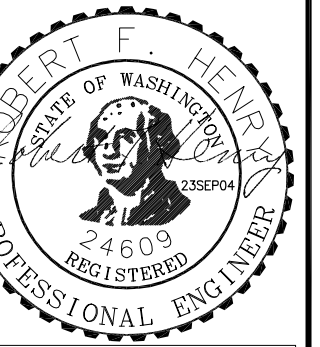


ART ANDERSON ASSOCIATES

ASSOCIATES

202 PACIFIC AVE
BREMERTON, WA 98337
(360) 479-5600

810 THIRD AVE SUITE 700
SEATTLE, WA 98104
(206) 622-6221



EXPIRES 7-12-06

**AQUA EXPRESS
NEW PASSENGER FERRY DOCK
AT PORT OF KINGSTON
BARGE FABRICATION PACKAGE**

DRAWN: KJH

DESIGNED: PRV

CHECKED: RFH

DATE

23SEP04

REVISIONS

JOB NO

FWAQX001

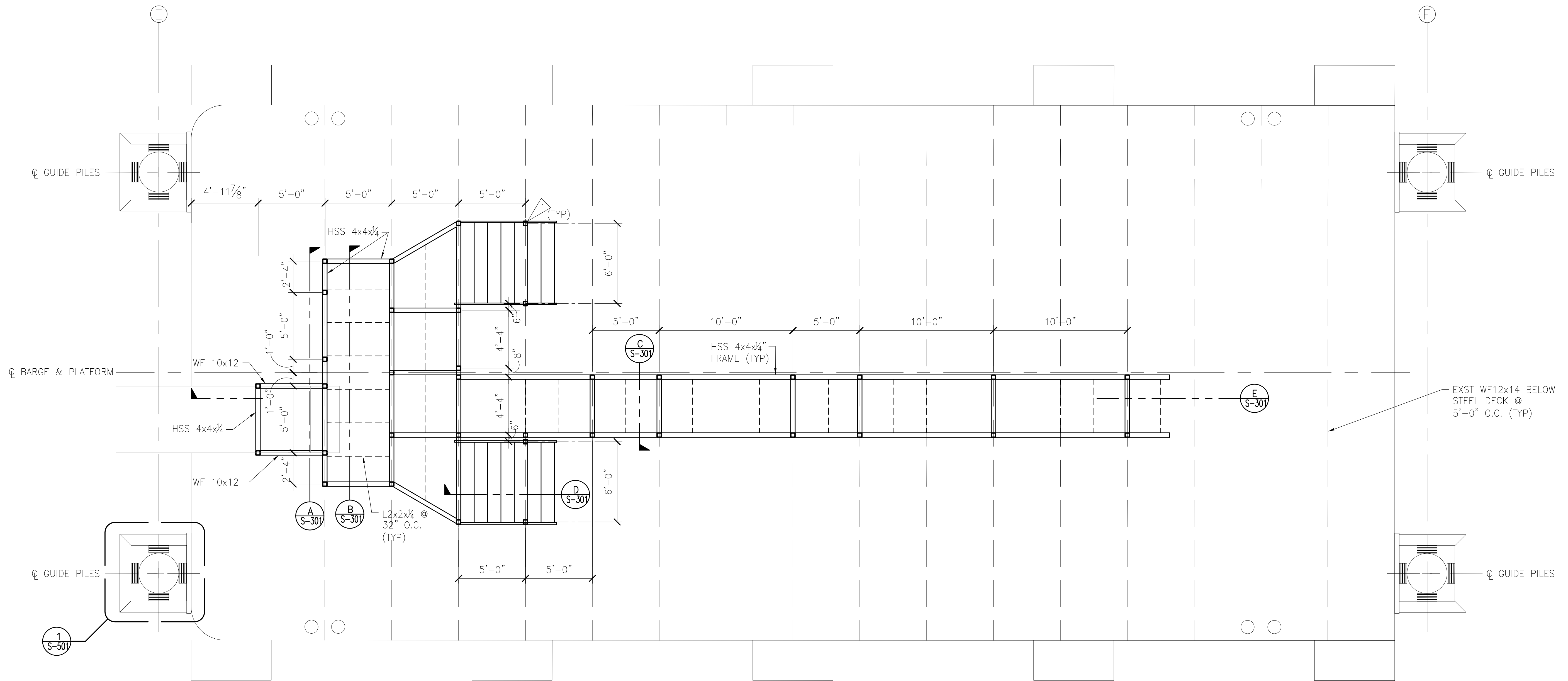
SHT TITLE

BARGE

FRAMING PLAN

SHT NO

S-101

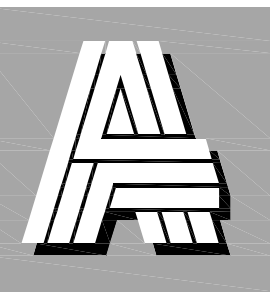


1 LOWER LEVEL FRAMING PLAN
S-401 SCALE: 1/4"=1'-0"

FLAG NOTES:

1 CENTER COLUMNS OVER BARGE FRAMES, TYPICAL.

IF SHEET IS NOT
22"x34"
SCALE
ACCORDINGLY

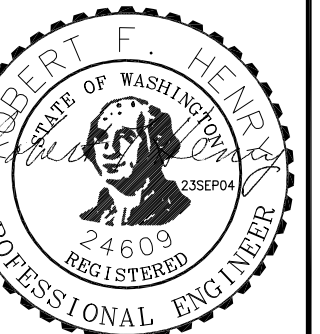


**ART
ANDERSON**

ASSOCIATES

202 PACIFIC AVE
BREMERTON, WA 98337
(360) 479-5600

810 THIRD AVE SUITE 700
SEATTLE, WA 98104
(206) 622-6221



EXPIRES 7-12-06

**AQUA EXPRESS
NEW PASSENGER FERRY DOCK
AT PORT OF KINGSTON
BARGE FABRICATION PACKAGE**

DRAWN: KJH

DESIGNED: PRV

CHECKED: RFH

DATE

23SEP04

REVISIONS

JOB NO

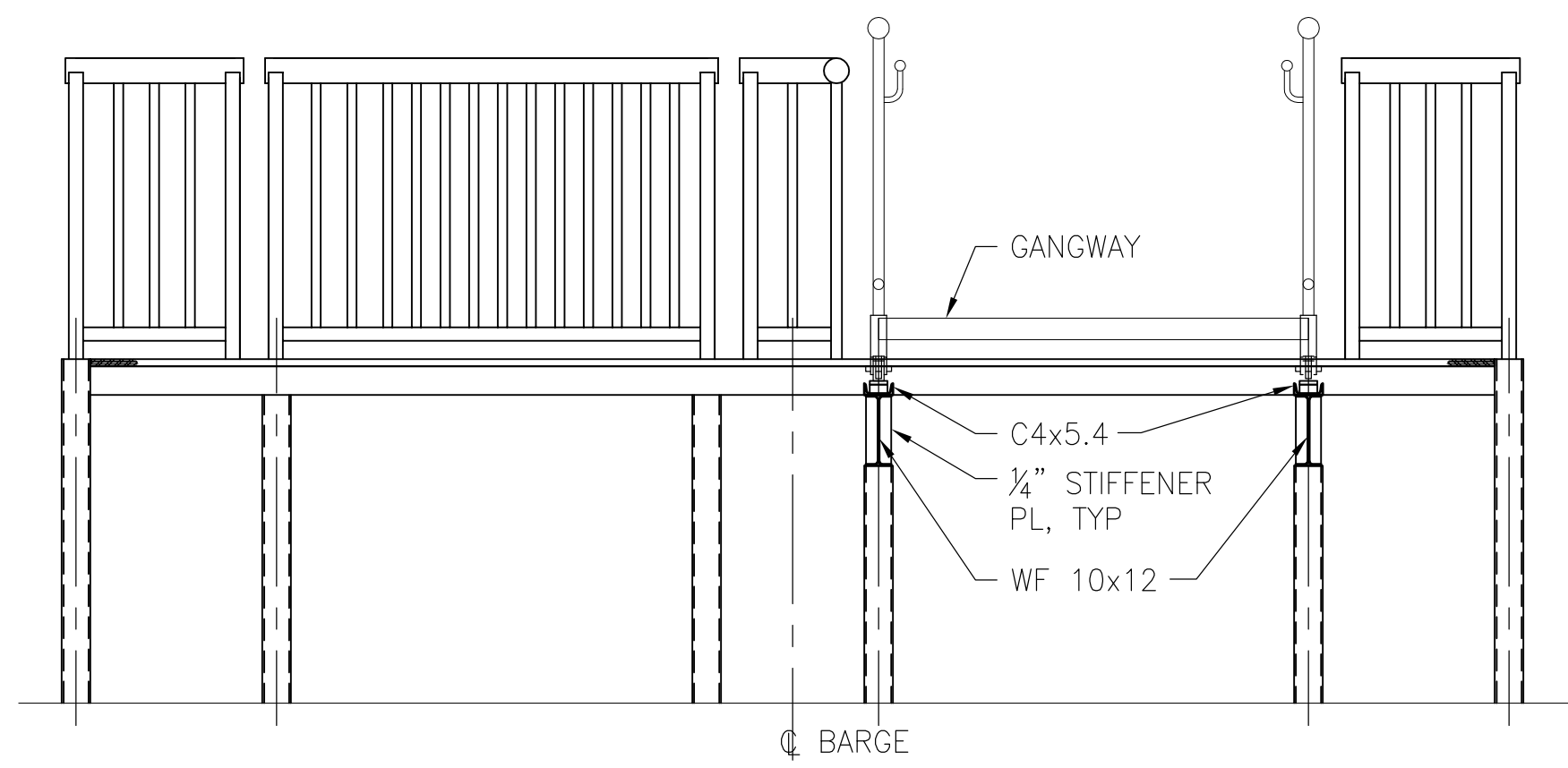
FWAQX001

SHT TITLE

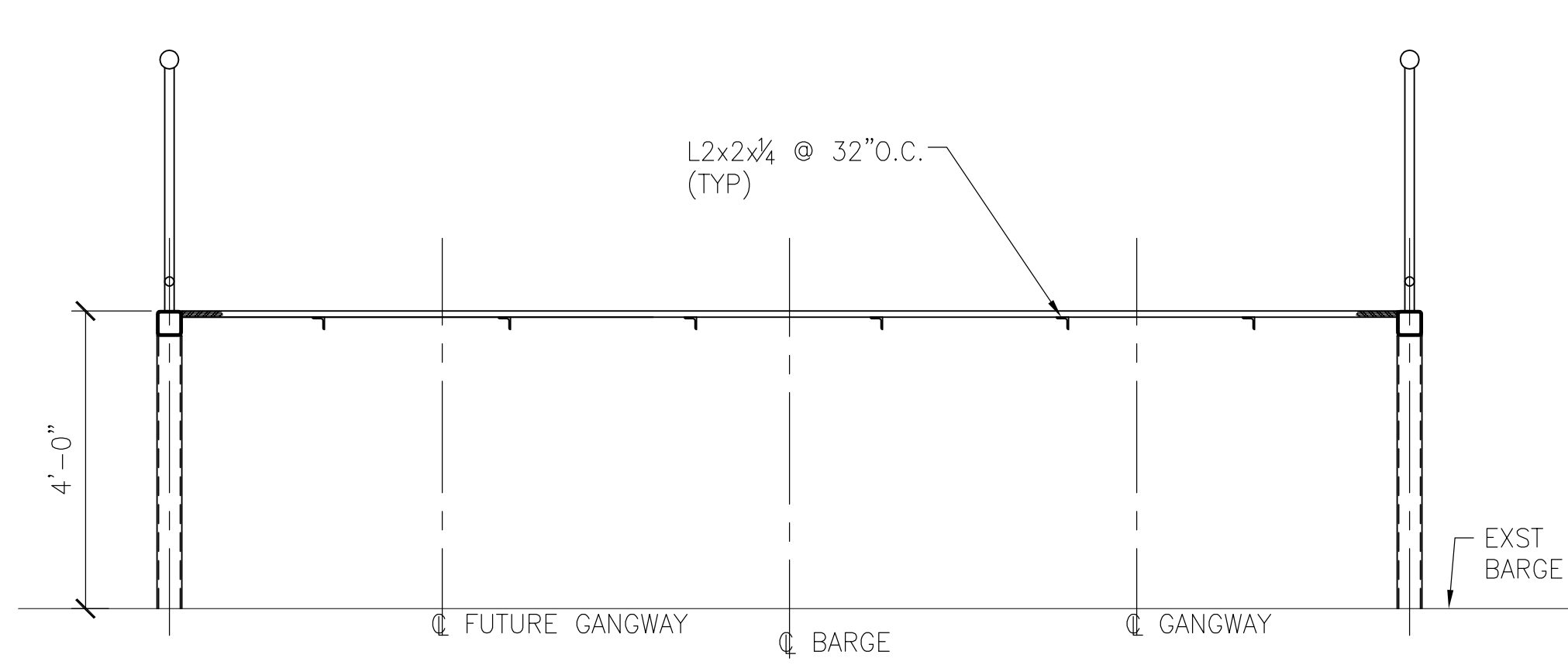
SECTIONS

SHT NO

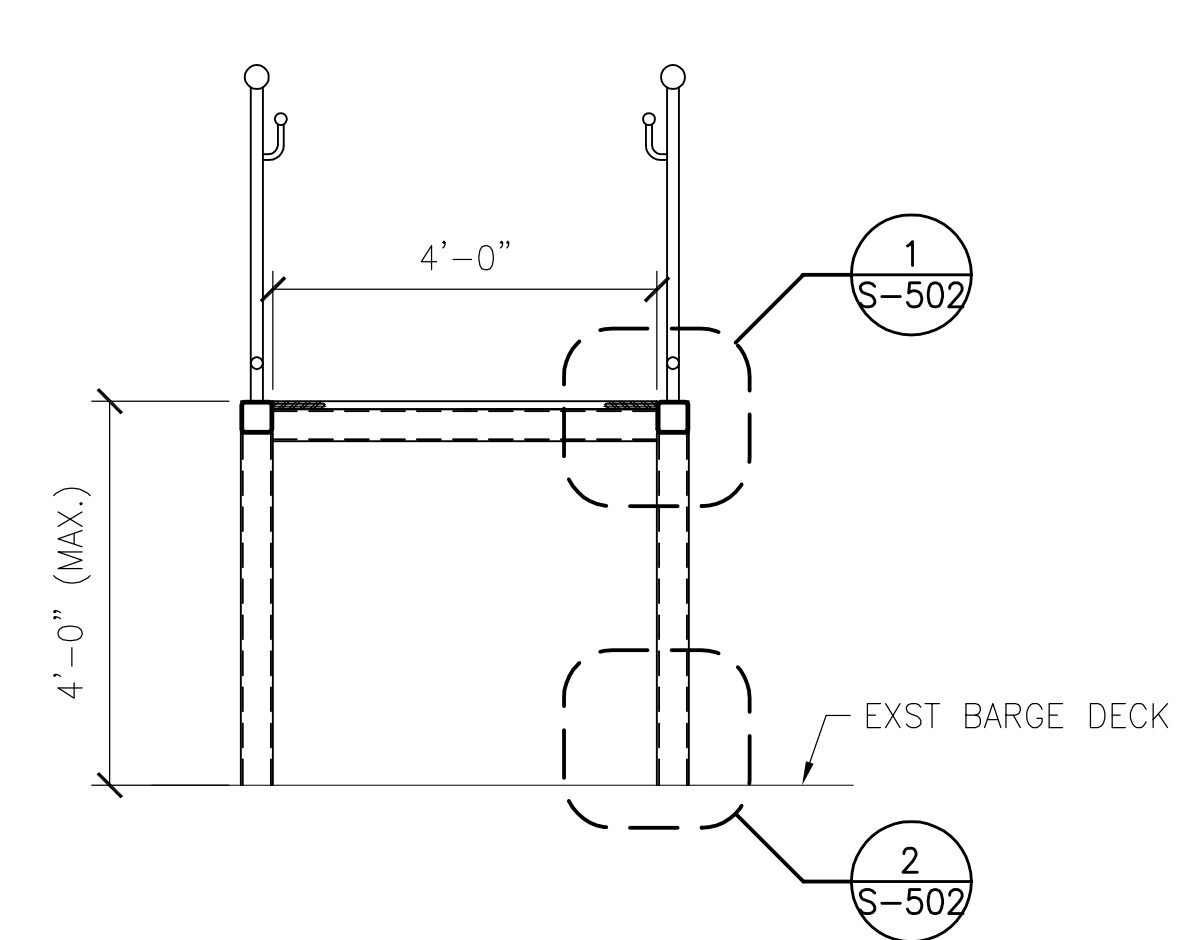
S-301



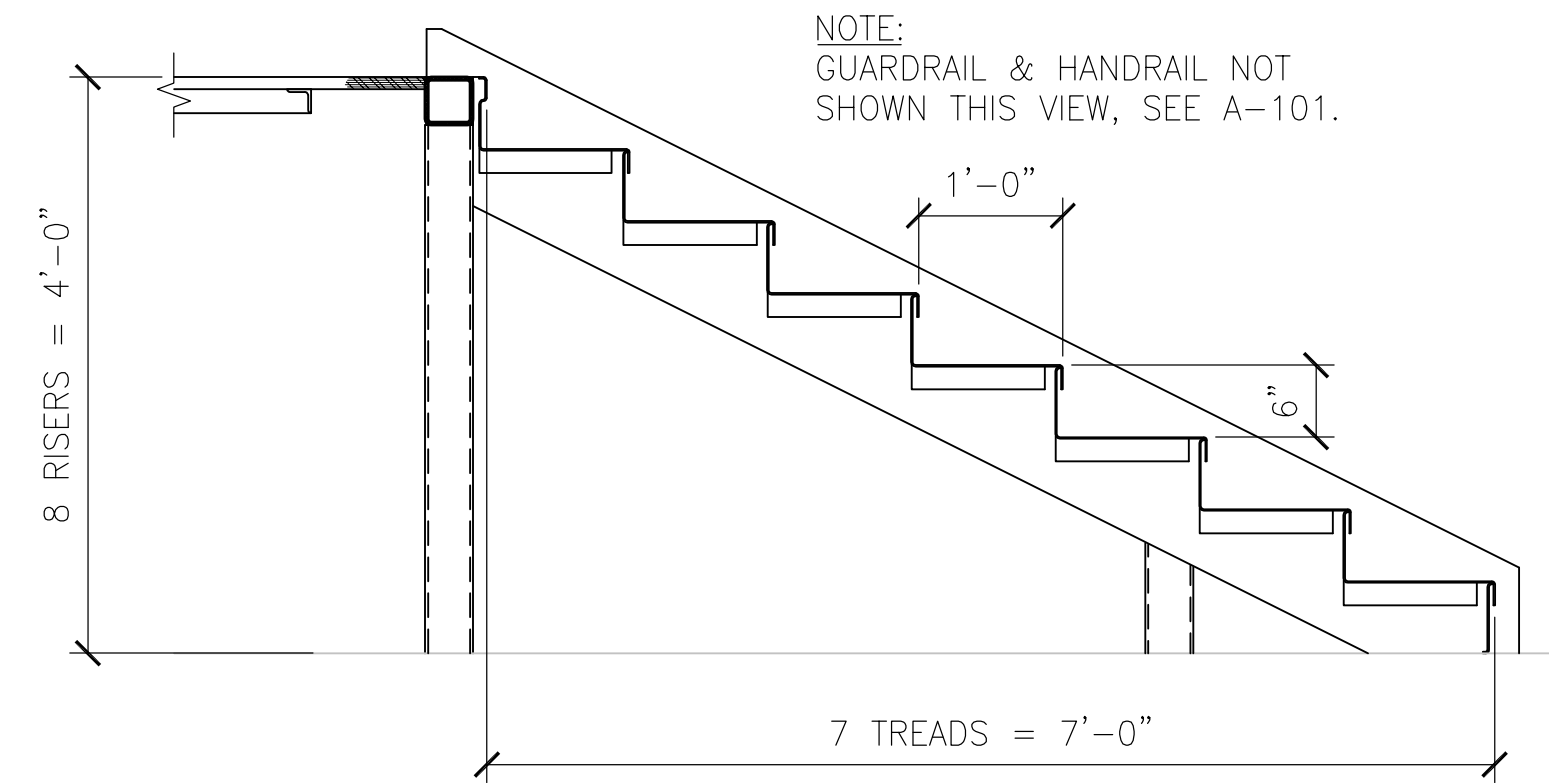
A SECTION @ GANGWAY SUPPORT
S-301 1/2"=1'-0"



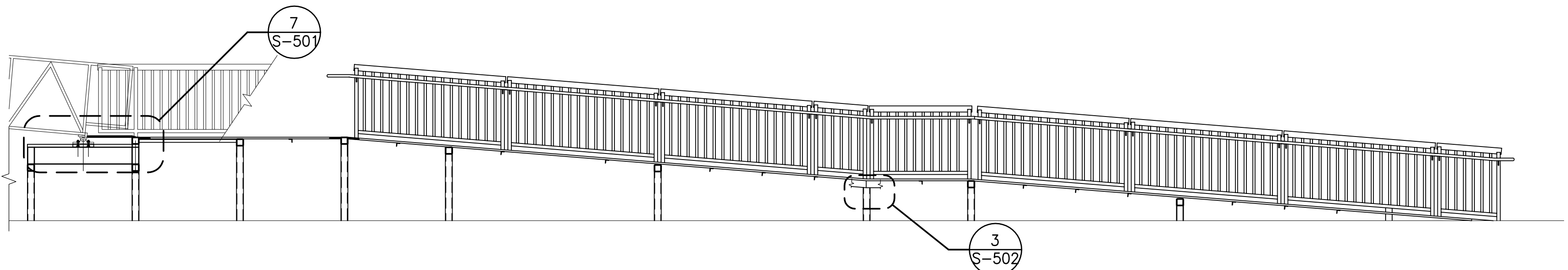
B SECTION @ PLATFORM
S-301 1/2"=1'-0"



C SECTION @ DIAGONAL BRACING
S-301 1/2"=1'-0"



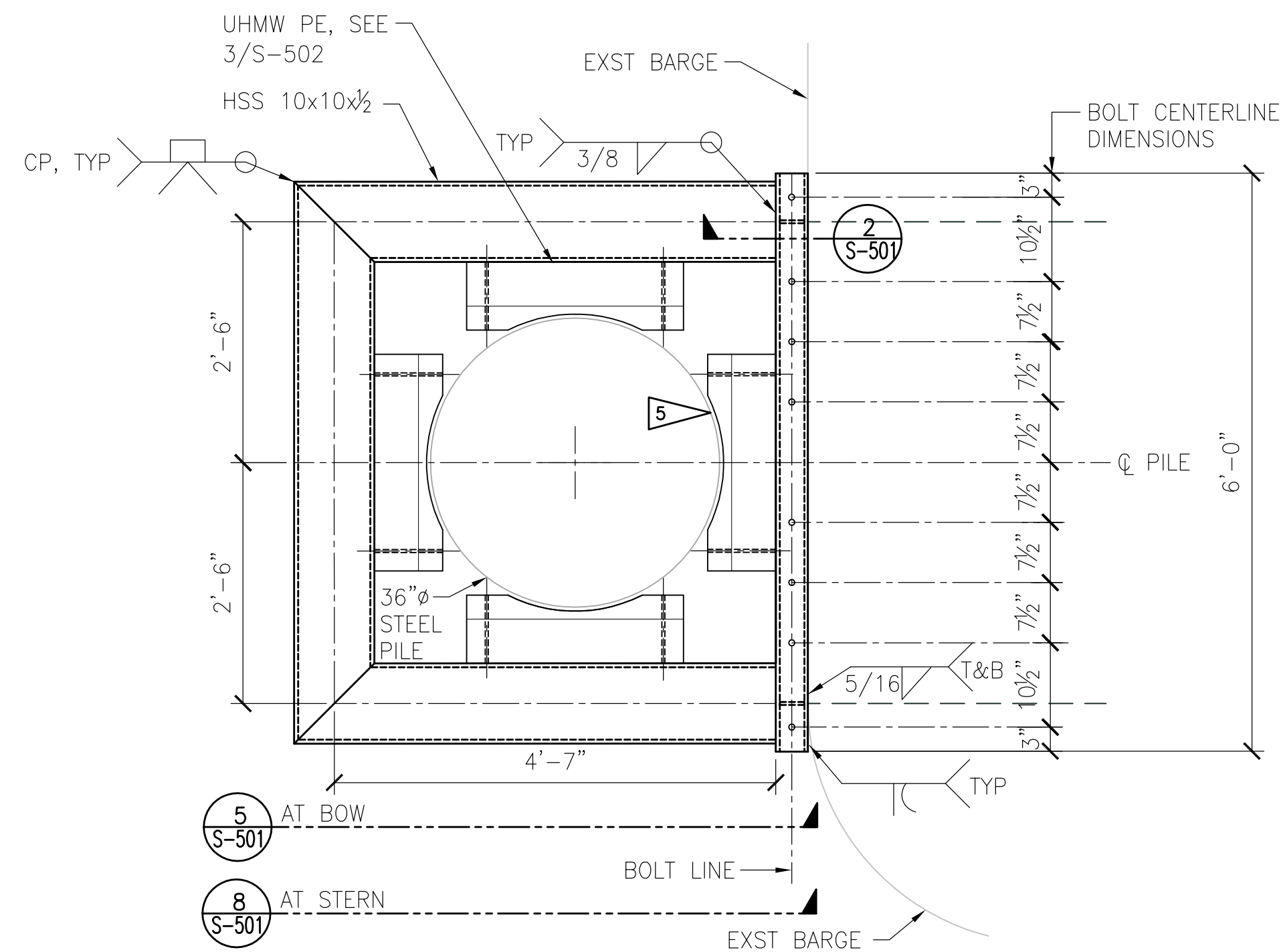
D SECTION @ STAIRS
S-301 3/4"=1'-0"



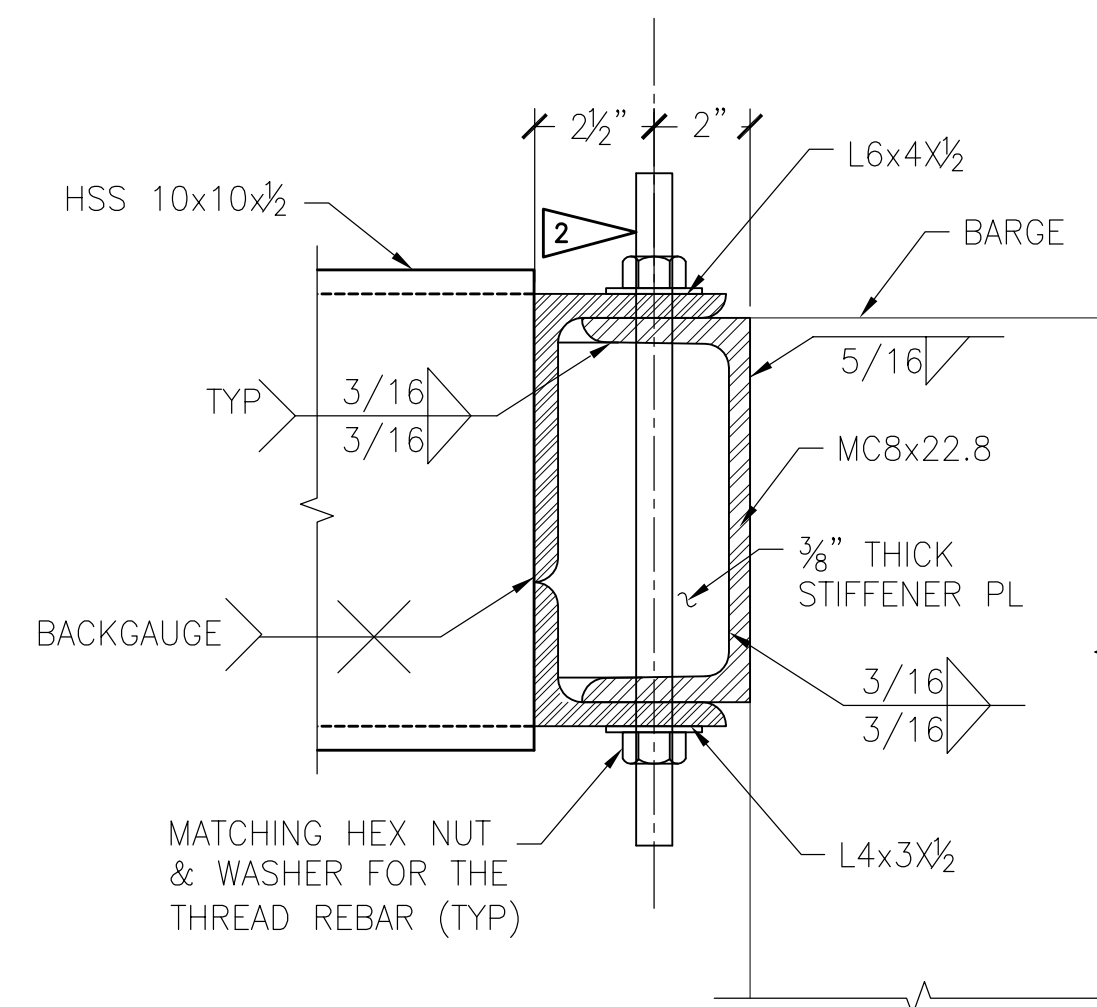
E SECTION @ PLATFORM/ADA RAMP
S-301 1/4"=1'-0"

NOTE:
GUARDRAIL & HANDRAIL NOT
SHOWN THIS VIEW, SEE A-101.

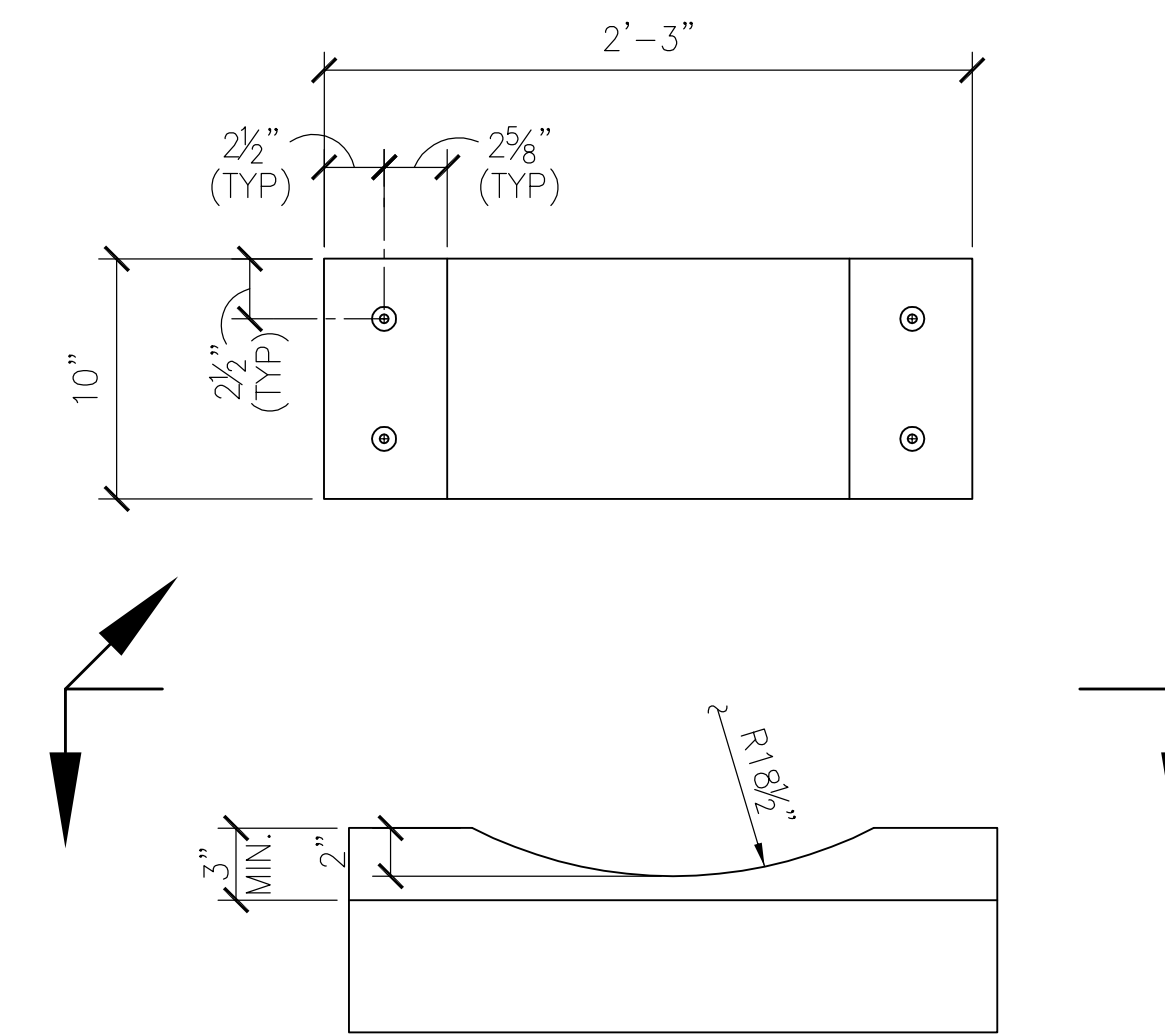
IF SHEET IS NOT
22"x34"
SCALE
ACCORDINGLY



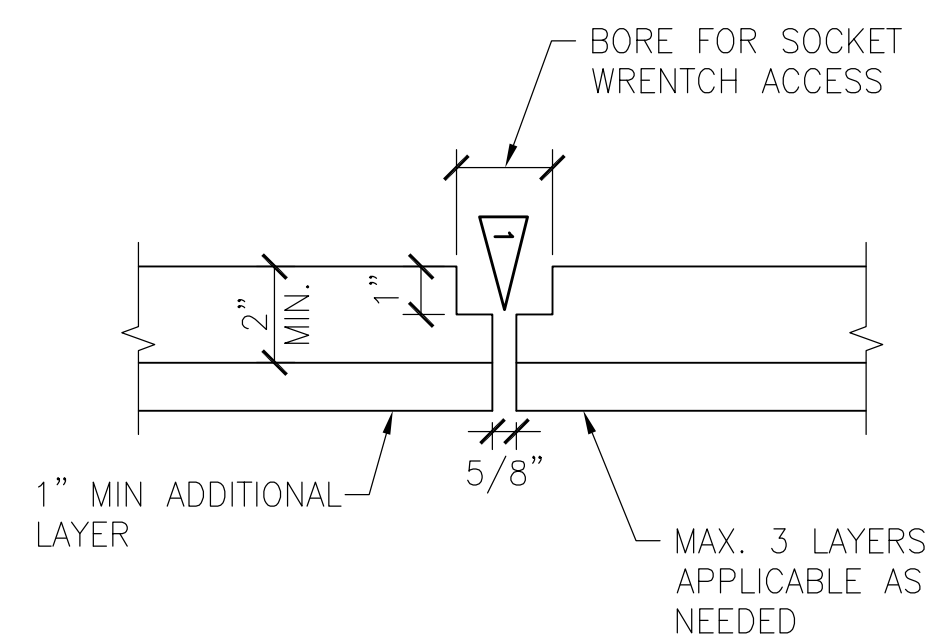
1 PILE HOOP DETAIL
S-501 3/4"=1'-0"



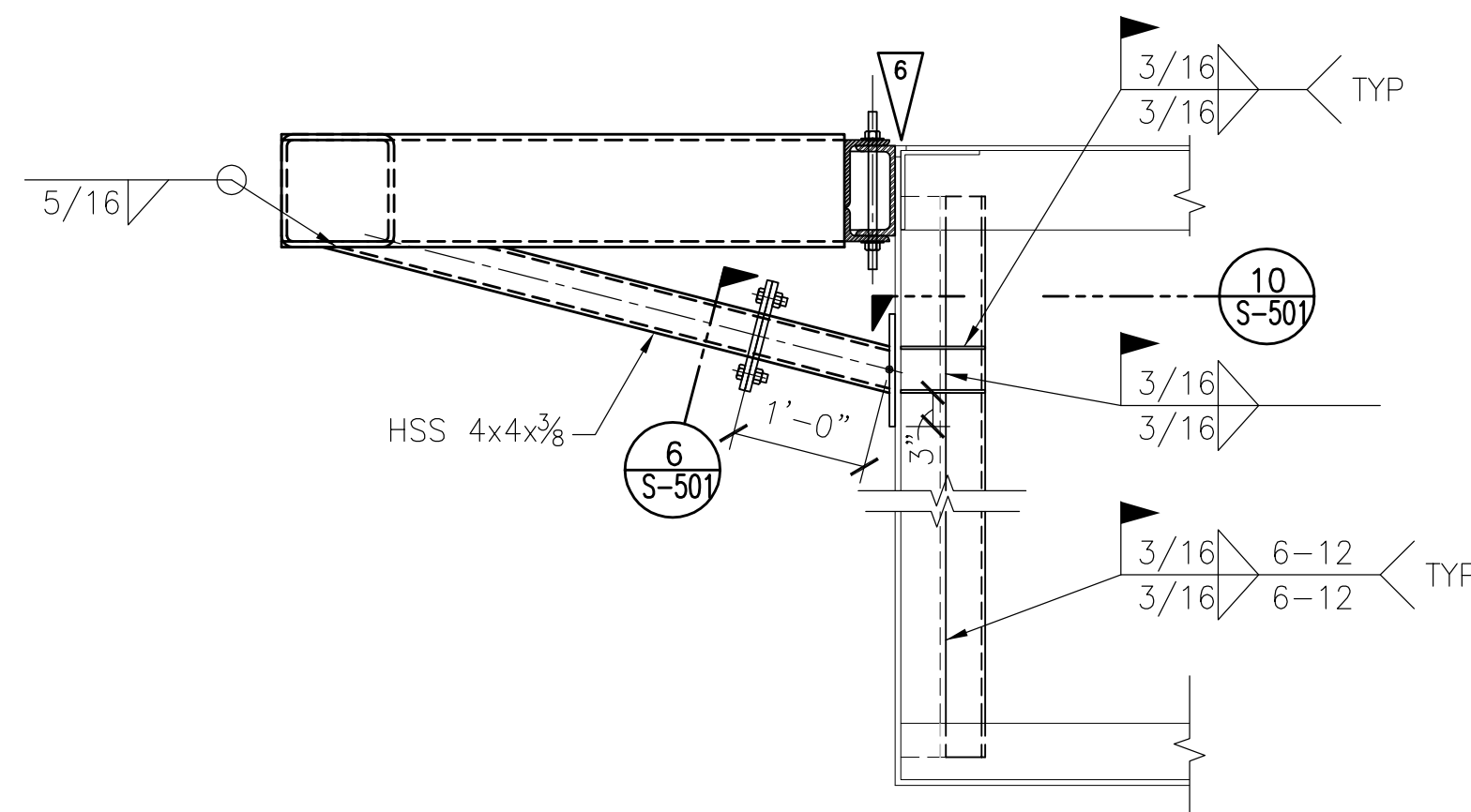
2 PILE HOOP CONNECTION TO BARGE DETAIL
S-501 3"=1'-0"



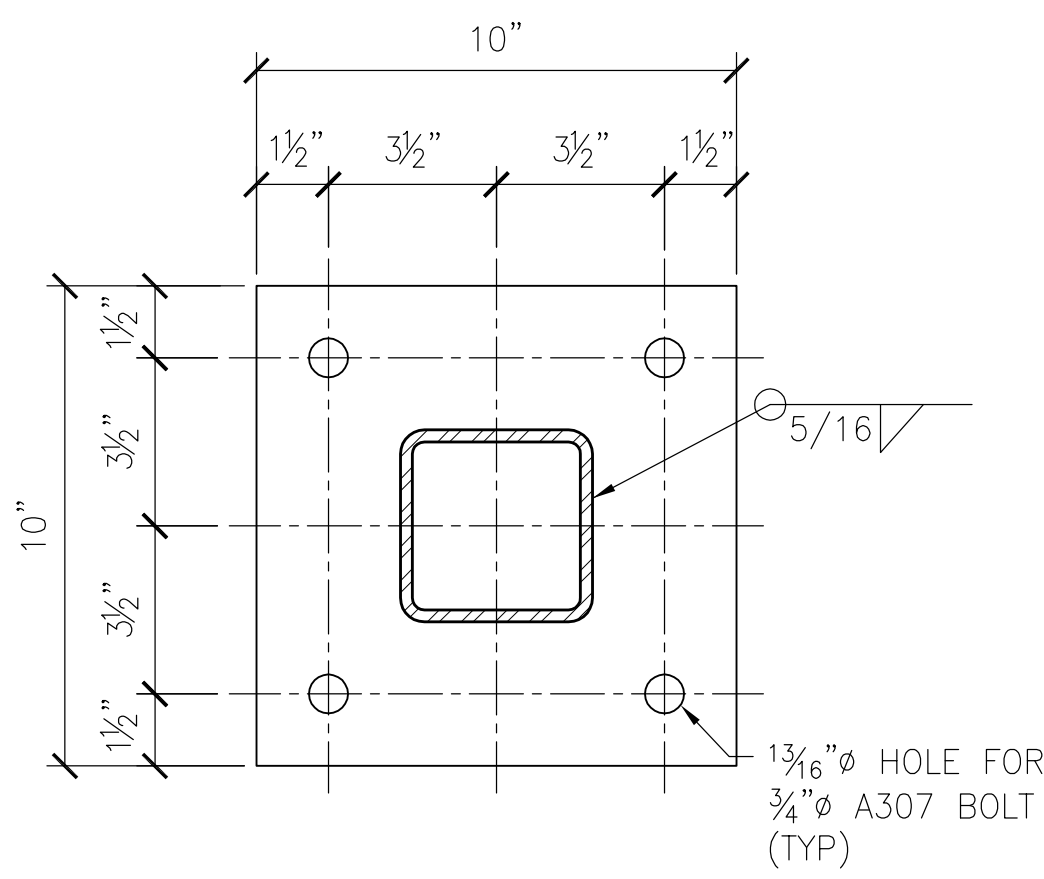
3 UHMW PANEL AND ANCHOR HOLE DETAIL
S-501 1 1/2"=1'-0"



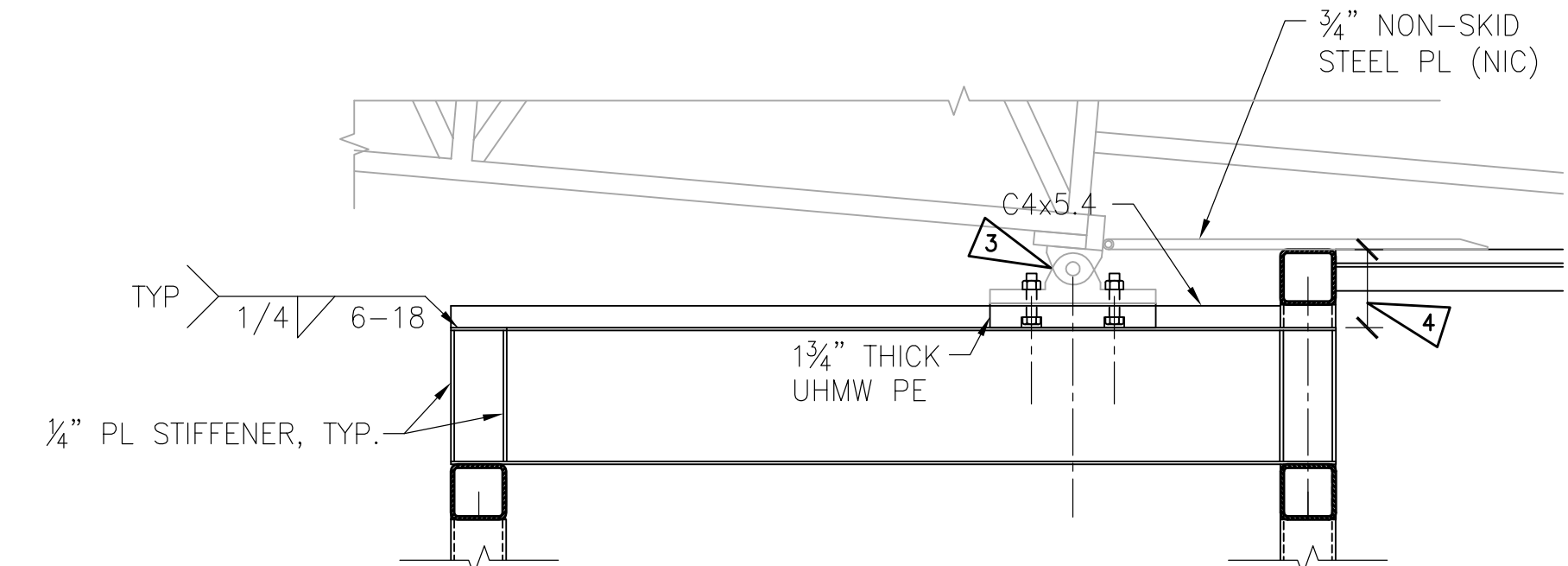
4 UHMW PANEL HOLE DETAIL
S-501 3"=1'-0"



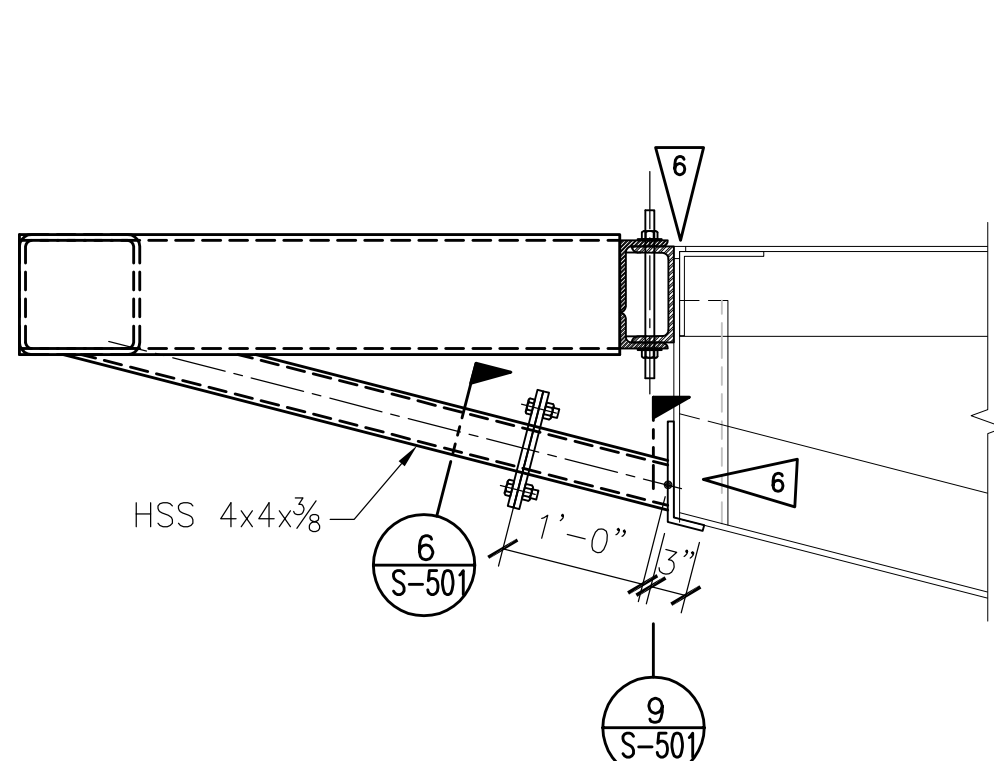
5 PILE HOOP DETAIL AT BOW
S-501 3/4"=1'-0"



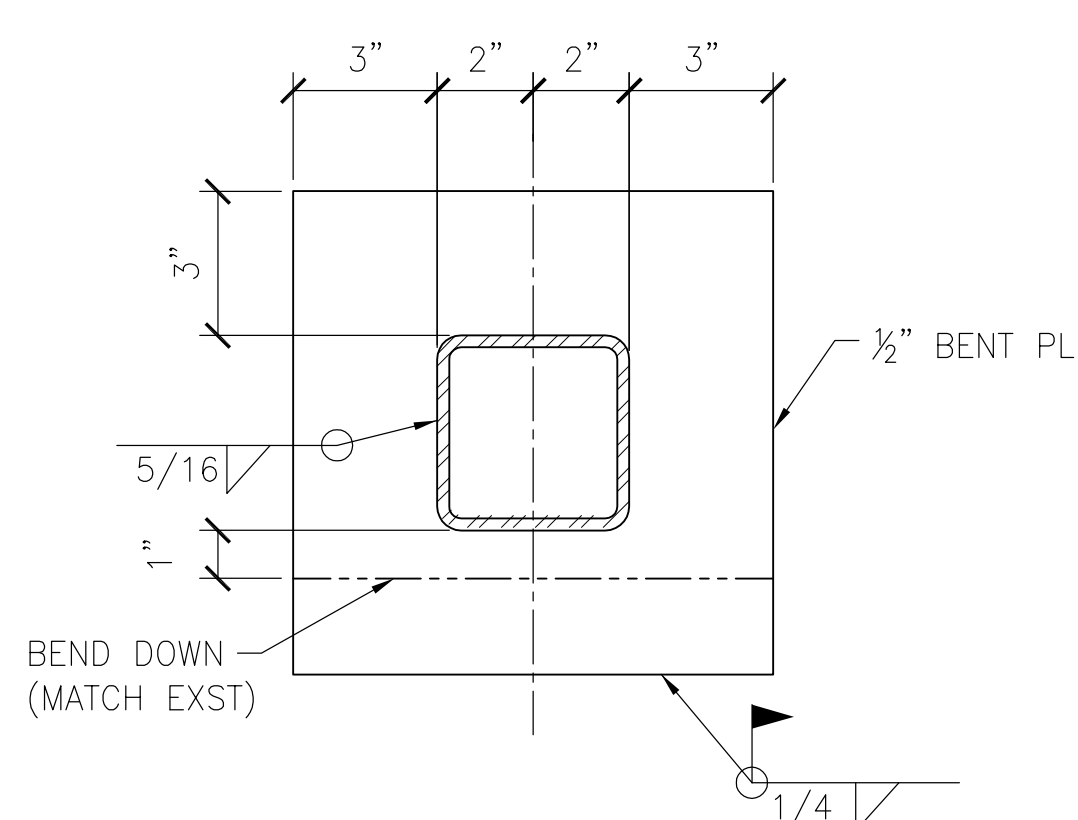
6 SPlicing FLANGE DETAIL
S-501 3"=1'-0"



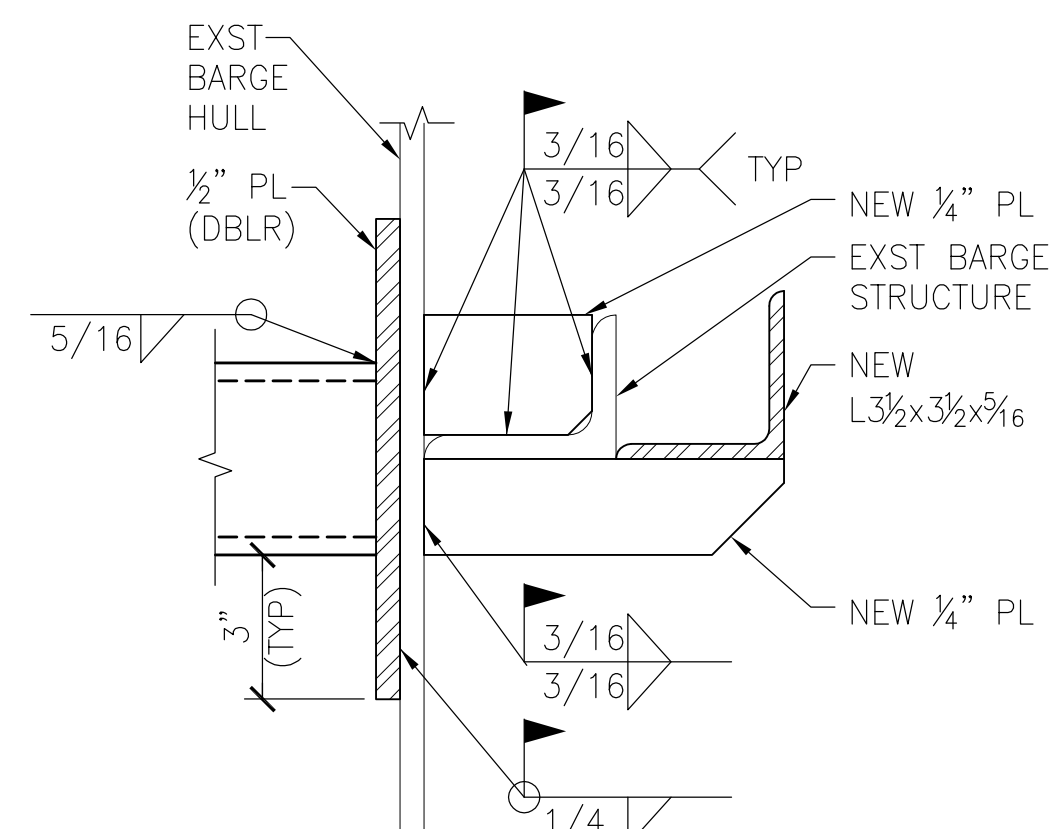
7 GANGWAY LANDING ON PLATFORM
S-501 1"=1'-0"



8 PILE HOOP DETAIL AT STERN
S-501 3/4"=1'-0"



9 DETAIL PL (DBLR)
S-501 3"=1'-0"

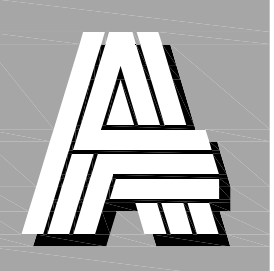


10 BARGE STIFFENING DETAIL
S-501 3"=1'-0"

FLAG NOTES:

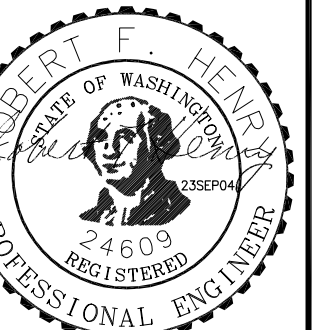
- 1 APPLY SELF 1/2" TAPPING BOLT THRU PILOT HOLE ON STEEL OR 1/2" ALL THREAD ROD (WITH NUT & WASHER) PASSING THRU STEEL SECTION (HOLE SIZE = 3/8")
- 2 WILLIAMS OR EQUIVALENT 3/4" GR 75 ALL-THREAD REBAR, HOT-DIP GALV., TYP. HIGH STRENGTH BARS AND HARDWARES SHALL BE MECHANICALLY CLEANED (NEVER ACID WASHED) PRIOR TO HOT-DIP GALV.
- 3 PROVIDE APPROPRIATE SLIDE HINGE CONNECTION FOR THE SELECTED GANGWAYS AND SHOW DETAILS IN SHOP DRAWING.
- 4 DIMENSION WILL BE DETERMINED AFTER SELECTION OF GANGWAY
- 5 MAX. 1" CLEARANCE BETWEEN UHMW PE AND PILE
- 6 SURFACE TO BE PREPARED IN ACCORDANCE WITH AWS D1.1.

IF SHEET IS NOT
22"x34"
SCALE
ACCORDINGLY



**ART
ANDERSON**
ASSOCIATES

202 PACIFIC AVE
BREMERTON, WA 98337
(360) 479-5600
810 THIRD AVE SUITE 700
SEATTLE, WA 98104
(206) 622-6221



EXPIRES 7-12-06

**AQUA EXPRESS
NEW PASSENGER FERRY DOCK
AT PORT OF KINGSTON
BARGE FABRICATION PACKAGE**

DRAWN: KJH
DESIGNED: PRV
CHECKED: RFH

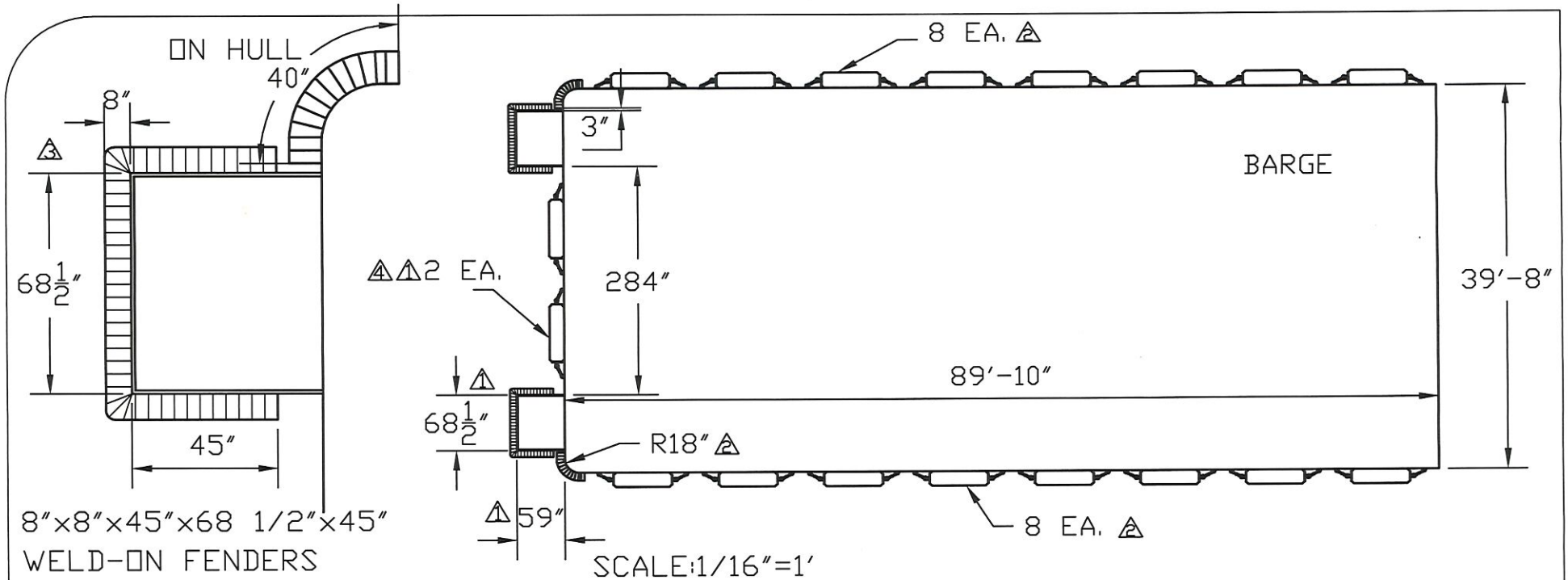
DATE: 23SEP04

REVISIONS:

JOB NO: FWAQX001

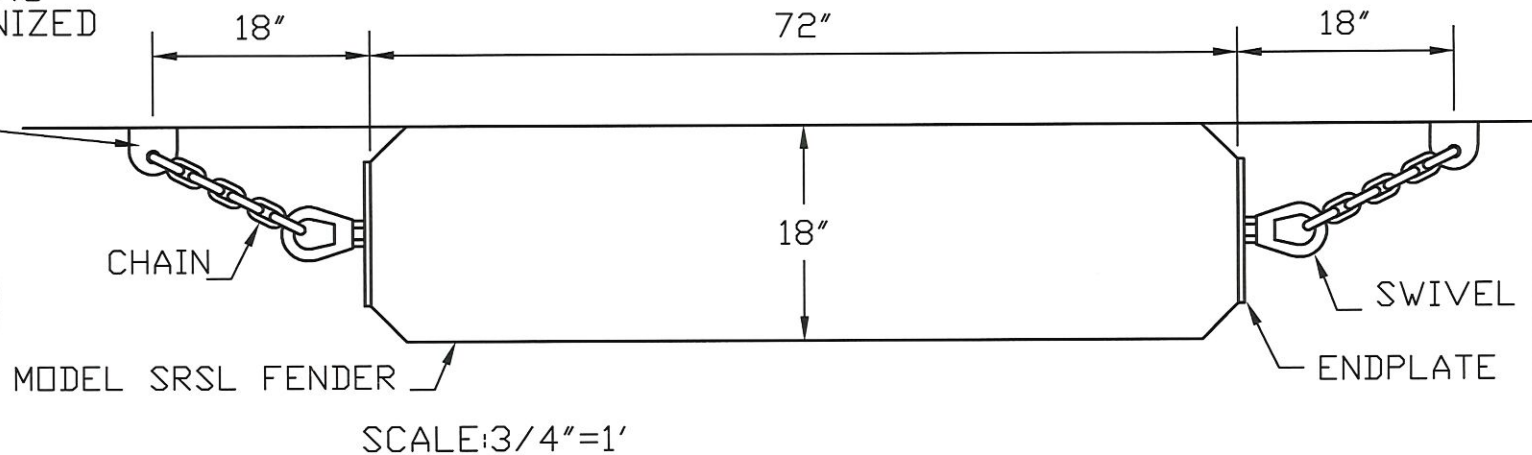
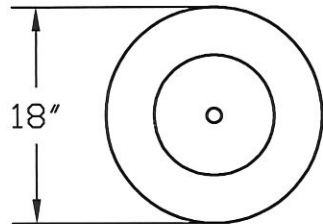
SHT TITLE: DETAILS

SHT NO: **S-501**



NOTE: ALL MOUNTING HARDWARE GALVANIZED

PADEYE MOUNTED TO BARGE



REV. NO.	BY	DESCRIPTION	DATE
4	W.P.	WAS 3 FENDERS	4-12-10
3	W.P.	ADDED BOX WRAP FENDERS & DETAIL	4-8-10
2	W.P.	ADDED 18" R. WAS 9 FENDERS PER SIDE	4-8-10
1	W.P.	ADDED PUSHKNEE BOX, WAS 4 FENDERS	4-7-10

PROJECT TITLE:	PORT OF KINGSTON
DATE:	3-22-10
SCALE:	AS NOTED
CHK BY:	XXX
APPROVED FOR CONSTRUCTION BY:	
THIS DRAWING AND THE DESIGN IT REPRESENTS IS THE PROPERTY OF SCHUYLER RUBBER. ANY USE OTHER THAN THAT WHICH IS EXPRESSLY AUTHORIZED BY SCHUYLER RUBBER IS PROHIBITED. © COPYRIGHT 2004	

DRAWING TITLE:	PASSENGER LOADING BARGE
RELEASE OF THIS DRAWING VOIDS ALL OTHER REVISIONS, IF ANY, PREVIOUSLY RELEASED.	
QUOTE/WORK ORDER NO.:	XXXX
DRAWING NO.:	SR0435
REV. NO.:	4

